

THE MOST COMFORTABLE SPA
MADE IN THE USA™

Dynasty Spas



SPA to SWIM SPA
COLLECTION

DYNASTY **SPAS**®



DYNASTY SPAS



Our Values



Mike Deans

Dynasty Spas Founding President

**Respect
Cooperation
Fairness
Good Work
Results**



**Friendship
Contribution
Honesty
Confidence
Progress**



Clément Hudon

Trevi Founding President

Our Mission Statement

Dynasty Spas is a family business out of Athens Tennessee, part of the Trevi group of companies.

In business for over 28 years, Dynasty was built on a friendship between 2 founders and their vision to produce quality spas, with lifelong service, that would be a "daily vacation" where people would be able to relax, enjoy each other's company, as well as some well-deserved quiet time.

Our purpose goes beyond making spas, it is to offer a life-changing product and to build these true durable friendships: with our employees, with our suppliers, with our customers, but mostly, for the consumer.

DYNASTY SPAS

- 04 4 SEASONS OF BENEFITS**
- 05 M.A.E. CERTIFICATION**
(RESEARCH AND DEVELOPMENT LAB)
- 06 ANATOMY OF A DYNASTY SPA**
- 07 JETS TO SUIT YOUR NEEDS**
- 07 DYNASTY SPAS REVIEWS**

BALNEOTHERAPY

- 08 BALNEOTHERAPY INTRO**
- 08 BALNEOTHERAPY**
- 11 RELAXATION AND STRESS MANAGEMENT**
- 13 BACKACHES AND LUMBAR PAIN**
- 15 JOINT AND MUSCLE PAIN**
- 17 POSITIVE EFFECTS ON SLEEP PATTERN**
- 19 CRADIOVASCULAR HEALTH**
- 21 REFLEXOLOGY**

VACATION COLLECTION

- 24 BIMINI**
- 26 TREASURE CAY**
- 28 SUNSET COVE**
- 30 TRANQUILITY HARBOR**
- 32 SERENITY COVE**
- 34 OCEAN BREEZE**
- 36 CABANA BAY**

OASIS COLLECTION

- 40 TWIN PALMS**
- 42 NASSAU ROYALE**
- 44 CARIBBEAN BREEZE**
- 46 COCONUT BAY II/III**
- 48 PLEASURE COVE II/III**
- 50 PALM ISLAND II/III**
- 52 PARADISE BAY II/III**

FAMILY COLLECTION

- 56 11' FAMILY ISLAND OASIS**
- 57 13' AQUEX PARTY**

SWIM SPA COLLECTION

- 60 13' AQUEX PRO**
- 61 13' AQUEX PRO PLUS**
- 62 16' AQUEX TRAINER**
- 63 17' AQUEX PRO PLUS**
- 64 19' AQUEX DUAL PRO**
- 65 SWIM COACH**

STANDARD ELEMENTS & FEATURES

- 68 ACRYLIC COLORS AND SKIRTING**
- 70 IN.TOUCH**
- 70 INTUITIVE SPA FUNCTIONS**
- 71 IN.STREAM AUDIO SYSTEM**
- 71 IN.MIX ILLUMINATION**
- 72 OZONATOR**
- 72 TOPSIDE CONTROLS**
- 73 CONTROL SYSTEM / PUMP / PLUMBING**
- 74 STRUCTURE / SHELL / BASE**
- 75 RMAX™ HEAT-SHIELD**
- 76 COVERS**
- 77 SPA AND SWIM SPA WARRANTY**

78 DYNASTY "MADE IN AMERICA"

- 78 BACK COVER Our Story**
- 78 BACK COVER Disclaimers**





DYNASTY SPAS

4 SEASONS OF BENEFITS

Taking a spa is enjoyable all year round, but it's even more so in the winter. There is nothing better than enjoying warm and relaxing water to forget the inconveniences of the cold season and appreciate its beauty,

The special insulation of Dynasty Spas allows the water to remain at a high temperature even in the coldest weather. Whether you want to spice up an evening with friends, relax, or relieve your joint and muscle pain you can enjoy the benefits of Hydrotherapy 365 days a year.

- Heat-shield RMAX™ Insulation System,
- Multi- Layered fiberglass spa shell,
- Foil faced RMAX™ Foam Panels.
- * Maintenance free Confer Skirting.
- ABS Permanent Bottom.
- Floor entirely covered with heat reflecting bubble insulation.
- Heated airspace.
- Up to 7 times the R-value of competing models, additional protection from freezing. Unique design protects equipment and allows easy access for maintenance and additional options.
- Acts as a sound barrier.

Dynasty Spas goes through a series of testing for the heat-shield name. We test the water temperature and regulate the process of heating, Dynasty Spas has its own Research and Development lab, to ensure your Dynasty Spas will keep you relaxed for years to come.



DYNASTY SPAS[®]
MODERNIZED APPLIANCE EFFICIENCY

"ISO 17025 LABORATORY" and "ANSI/APSP"



USA CERTIFIED

M.A.E. CERTIFIED

At Dynasty Spas, we take pride in our products. We ensure that our spas are aesthetically pleasing, have sturdy construction, and are energy efficient for the end user.

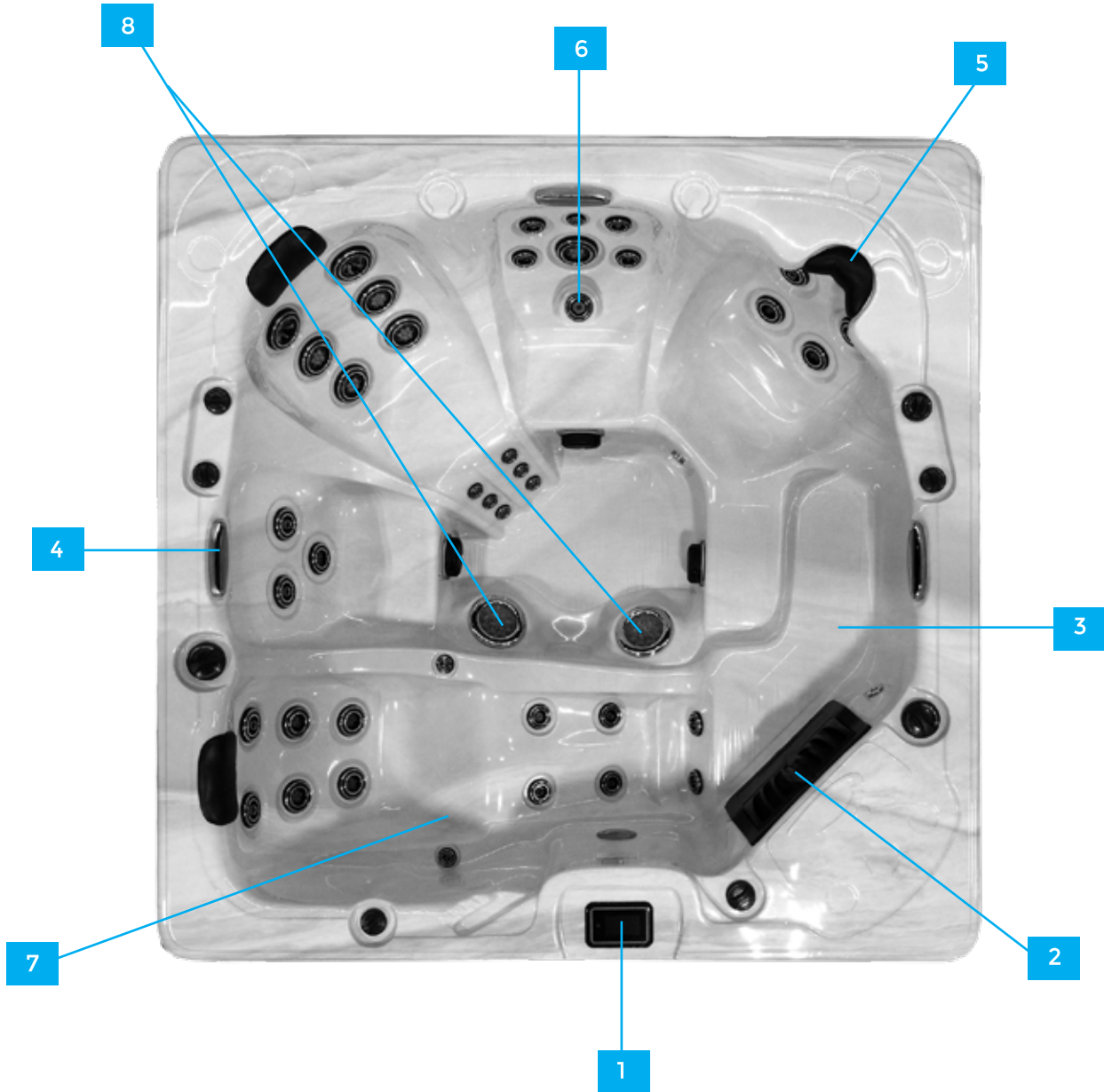
The **Dynasty Spas Modernized Appliance Efficiency Laboratory (M.A.E. Lab)** is where we apply rigorous test procedures to each of our models. With high precision instruments, we verify that our spas not only maintain a consistent temperature, but also meet the energy requirements stated by the ANSI/APSP 2019 standards, as well as **California Title 20**.

All models tested in the M.A.E. Lab are first verified for fit and finish. Water volume is then recorded. Once the spa has been filled, we allow the spa to heat to specified temperature. A stabilization test (minimum 4 hours) is then performed with spa cover installed to determine that the spa can maintain the appropriate temperature. After it is determined that the spa can maintain set temperature, we begin the official energy test (72 hours). Upon completion, test data is verified then uploaded to the MAEDBS database. The Dynasty Spas Modernized Efficiency Lab is:

- Fully insulated and temperature controlled
- ISO 17025 compliant
- Uses high precision instruments that are calibrated at regular intervals
- Meets ANSI/APSP testing specifications
- Meets California Title 20 specification



ANATOMY OF A DYNASTY SPA



1. Topside Control

2. Built-in Filtration Cartridge

3. Safe Entrance Steps and Child Seat

4. Waterfall Features on Select Models

5. Trapezius and Cervical Station.

6. Sciatic Nerve

7. Zero Gravity Lounge Chair

8. Reflexology Diffuser

The number of jets is not as important as their location.

JETS TO SUIT YOUR NEEDS

AIR/WATER MULTI-JETS

The combination of air and water doubles the strength of the jet, for a targeted massage on specific areas of your body.

AQUAKINETIC® HYDROTHERAPY - JET SYSTEM (Jet Styles, Colors, Illumination and Sizes May Vary.)

	 <p>DIRECTIONAL STATION Relieves muscle tension and improves blood circulation its spiral action provides a vigorous massage.</p>		 <p>VORTEX STATION Stimulated the body's smallest points of energy.</p>		 <p>TUINA STATION Direct a vigorous water flow along with the meridian lines. Inspired by Chinese massage. (Offered on certain models only)</p>
	 <p>FOOT MASSAGE A large concentration of nerve endings are located in the feet. Enjoy the soothing effect of a foot massage, whoever you choose to sit in your hot tub.</p>		 <p>SHIATSU STATION Much like a finger, hand and elbow shiatsu massage, this station can offer both a soft, relaxing flow or a vigorous pulsating purpose.</p>		 <p>ROTARY SHOWER Powerful jets that you can place your legs over for a strong massage effect they are great for post recovery after a strenuous activity.</p>

“DYNASTY SPAS 5 STAR REVIEWS”

★★★★★

Great spa

“Review by Jeff B. on 6 Jan 2023 review stating Great spa We Love our hot-tub, the different jet placement really set it apart from others. It’s perfect for relaxing after the work day or hitting sore muscles after a workout.”

★★★★★

Great repair customer service

Review by Eric Z. on 5 Jan 2023 review stating Great repair customer service Thank you Jeremy for your amazing customer service fixing the screen on our new swim spa. He went above and beyond! It’s so nice to know that we are in such good hands with the replacement parts and service when we need them!

★★★★★

Tranquility Harbor

Review by Patty C. on 9 Dec 2022 I have had 3 homes over the years and each one had a hot tub. I must say that the Dynasty Spa is the most comfortable spa that I have ever tried.

★★★★★

Review by Mary S. on 14 Oct 2022 review stating 2019 Serenity Cove Review 3 years later and I haven't had a single issue with this hot tub. We use it all the time and it has been a great addition to our yard! Love the our exclusive jet arrangement. Thanks for creating a reliable and quality tub.

Balneotherapy

in the comfort of your own yard.

20
min
3X
week

20 minutes a day. 3 Times a week. That's all.

To quickly feel the benefits of balneotherapy on your health, soak in your spa for 20 minutes a day, 3 times a week. By combining your seasons with a healthy diet and physical activity, you will quickly see noticeable positive effects on your daily well-being.



BALNEOTHERAPY

Taking a spa is enjoyable all year round, but it's even more so in the winter. There is nothing better than enjoying warm and relaxing water to forget the inconveniences of the cold season and appreciate its beauty,

1. Helps with relaxation and stress management
2. Relieves backaches and lumbar pain
3. Soothes joint and muscle pain
4. Promotes sleep
5. Improves cardiovascular health

All of these benefits, and many more, are now well documented. Find out more in the following pages.





RELAXATION AND STRESS MANAGEMENT

Did you know that to manage stress, medical students from many universities are required to take meditation classes? Moments of relaxation in the comfort of a spa produce physiological effects comparable to these meditative sessions: the mere act of soaking in hot water can help manage stress, and even improve cognitive performance.

Spending time in a spa influences brain functions, generating physiological effects comparable to those brought on by meditation. This is what a study published in the International Journal of Aquatic Research and Education suggests¹. It reports that a 20-minute immersion in hot water causes the autonomic nervous system to adjust, just as meditation does. This reaction promotes short-term memory, increases attention span, and improves brain functions that allow for the proper processing of information.

The mere fact of being immersed in a spa could influence the sympathovagal balance of the body. In short, this activity leads to a decrease in anxiety and stress, and generates positive ideas while lowering blood pressure and cardiac stress.





BACKACHES AND LUMBAR PAIN

The lower back and pelvis perform a colossal task: they alone support two thirds of our body weight. When your back hurts, the whole body is affected. According to data collected by United States Statistics 75% to 80% of people will experience at least one serious back pain episode or other back aches during their lifetime. As part of a study published in the *Journal of Rheumatology*⁴, patients with chronic back pain combined sessions in hot water basins with their medication. After 3 weeks, their pain had decreased significantly, and their backs had become more flexible.

After 6 months, these patients were able to reduce their medication intake. With its heat and massage jets, a spa can thus become a very effective everyday back pain management method.

American doctors from the Spine-Health.com organization claim that spending time in a spa is recommended for controlling back pain. It promotes blood circulation to the muscles and increases overall body flexibility.





JOINT AND MUSCLE PAIN

Many sportsmen and outdoor enthusiasts will tell you that after physical exertion, a spa is a great reward. Beyond relaxation, the soothing effects of a spa can make a major difference when pain remains persistent. There is evidence that, in addition to soothing aching muscles, hot water and massage jets also have the potential to soothe some chronic pain, such as pain caused by osteoarthritis.

According to a study published in the *Journal of Physical Therapy Science*⁶, patients experienced a significant easing of their osteoarthritic knee pain after spending time in a spa. The combination of immersion in hot water and hydro massage helps trigger calming mechanisms for joint pain.

Immersion in a spa may also soothe the pain caused by physical exertion. According to the Rochester University Medical Center, immersion in hot water dilates blood vessels, increases the supply of oxygen and nutrients, and thus relaxes muscles, ligaments and tendons. Moreover, according to a study by the *European Journal of Applied Physiology*, massage jets located in the spa could facilitate recovery after an intense physical effort, by releasing toxins from the muscles into the blood stream.





PRESSURE POINTS OF BALNEOTHERAPY JETS

1. Headaches
2. Shoulders and Rotators
3. Elbow Injuries
4. Lower-back pain and menstrual discomfort
5. Sciatic Pain
6. Carpal Tunnel Syndrome
7. Knee Ache
8. Calf Pain and Blood Circulation Issues.
9. Heel and Foot Arch Pain

POSITIVE EFFECTS ON SLEEP PATTERNS

Sleeping well is not a luxury: sleep disorders have a major impact on everyday health. According to an article in the Canadian Sleep Society's journal *Insomnia Round*, sleeping less than 6 hours a night can affect the brain's ability to plan, organize, be attentive, and develop strategies. About 40% of North Americans suffer from insomnia symptoms at different times of their lives. Spending time in a spa can be just what is needed. In addition to relaxation, there is evidence that an early evening spa session improves the length and quality of sleep.

In a study published in the scientific journal *Sleep*, researchers have found that immersion in hot water for 30 minutes, a few hours before going to bed, contributes to better quality sleep. Body temperature increases in the spa, then slowly decreases in the evening. This regulation helps to fall asleep faster, but also increases the quality of slow/deep sleep during the night, which are critical periods when the body regenerates. Therefore, in order to sleep well, a good soak in a spa is recommended. In addition to promoting relaxation, it can also improve the length and quality of sleep.

Adults need to sleep on average 8 hours per night. Besides fatigue and sleepiness, extended lack of sleep is associated with serious health problems such as depression and weight gain.



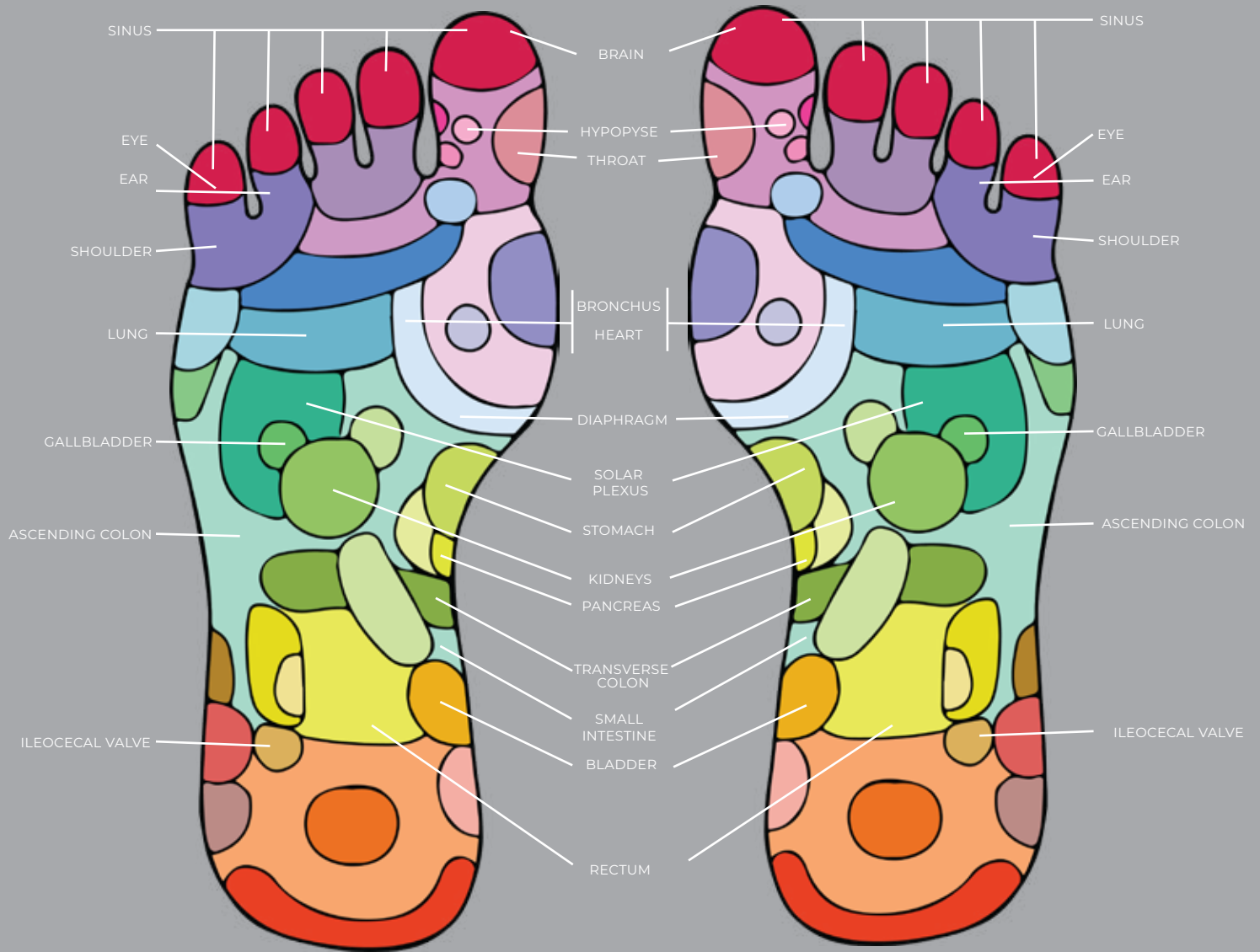


CARDIOVASCULAR HEALTH

Nothing can replace a healthy and active lifestyle, but sometimes health issues or overly busy days can put a considerable strain on the body, and moments spent relaxing in a spa can be beneficial. They may even have positive effects on your cardiovascular health (with prior approval from your doctor) if you have heart problems or suffer from high blood pressure. According to Dr. Thomas G. Allison, taking a relaxing break in the warm water of a spa may indeed be good for your heart, as the spa may simulate some aspects of exercise without the associated heart stress. A 10-minute hot bath may even be beneficial for people suffering from congestive heart failure.

In terms of heart health, sitting in hot water may also offer some of the same benefits as meditation. As part of a recently published study in the *International Journal of Aquatic Research and Education*, this phenomenon has been documented in participants who received 24-minute hot water sessions. The findings of this study show direct effects on the sympathovagal balance when the body is immersed in hot water. Specifically, in addition to the benefits to brain activity, this phenomenon may bring a decrease in blood pressure, cardiac irritability, and anxiety.

REFLEX ZONE MAP



RIGHT FOOT

LEFT FOOT

THE BENEFITS OF REFLEXOLOGY

In traditional Chinese medicine, reflexology has the ability to prevent a lot of health-related problems. The beneficial effects of jet impulses on the plantar surface of the foot are attributable to the stimulation of specific reflex zones.

In reflexology, the foot is divided into numerous reflex zones, each corresponding to a specific part of the human body. Reflexology consists of manipulating these zones to locate and alleviate tension and dysfunction, thus restoring the body's natural balance.

Vacation Collection

SPA MODELS





THE VACATION COLLECTION ARE EQUIPPED WITH THE FOLLOWING STANDARD FEATURES

506 Digital Controls
Underwater LED Light
Air / Water Multi - Jets
UV Treated Padded Pillows
Ozone Sanitation System
*VGB Compliant Intake
Energy Efficient Heater
Ecological RMAX™ Insulation
Lucite® Acrylic Shell
Maintenance Free Skirting
Full Wrap-Around ABS Bottom
5" - 3" Standard Taper Cover

*Virginia Graeme Baker Pool and Spa Safety Compliant



Bimini

VACATION COLLECTION





BIMINI Lounger

72" x 72" x 33.5"

160 Gallons

Cascading Waterfall

Electrical 110v or 220v

AMPS 20a or 48a

1 - 3.0 Pump on 110v / 20a

1 - 6.0 Pump on 220v / 48a

Filtration System Size 50 ft²

Weight: Dry / Filled (approx.)

350 lbs. / 1,390 lbs



"My husband and I absolutely love our Bimini spa. It's the perfect size for just the two of us and looks quite striking in our backyard. I suffer from rheumatoid arthritis and fibromyalgia, and after only a few weeks, I noticed a significant decrease in pain and stiffness. I would definitely recommend Dynasty to anyone looking for relief and relaxation!"

Treasure Cay

VACATION COLLECTION





TREASURE CAY Lounger

78" x 78" x 36"
280 Gallons
Cascading Waterfall
Electrical 110v or 220v
AMPS 20a or 48a
1 - 3.0 Pump on 110v / 20a
1 - 6.0 Pump on 220v / 48a
Filtration System Size 50 ft²
Weight: Dry / Filled (approx.)
600 lbs. / 3,160 lbs.



We purchased a Dynasty Spa a few months ago and we are totally in love with it! This hot tub has been an absolute pleasure to use from day one. It's providing much-needed relief from sore joints and muscles, and one of the biggest surprises is how many nights a week we actually use it. We are definitely getting our money's worth. Thank you Dynasty Spas!

Sunset Cove

VACATION COLLECTION





36
JETS

3

SUNSET COVE Lounger

60" x 82.5" x 33.5"

160 Gallons

Fountain Jets

Electrical 220v / 48a

1 - 6.0 Pump

Filtration System Size 50 ft²

Weight: Dry / Filled (approx.)

350 lbs. / 2,150 lbs.



Our Dynasty Spa is the most perfect size, we have a extremely small backyard and the Sunset Cove is the perfect size to make our evenings and weekends more relaxing.

Tranquility Harbor

VACATION COLLECTION





42
JETS



TRANQUILITY HARBOR

Bench

82" x 82" x 39"

295 Gallons

Cascading Waterfall

Electrical 220v / 60a

2 - 6.0 Pumps

Filtration System Size 50 ft²

Weight: Dry / Filled (approx.)

675 lbs. / 3475 lbs.



This may be the best purchase my wife and I have ever made. It's great for relaxing at the end of the day, spending screen-free time with the kids, and it's big enough to entertain guests comfortably. We look forward to the weekends when we invite our friends over, fire up the grill, and spend the afternoon relaxing. This spa definitely lives up to its name.

Serenity Cove

VACATION COLLECTION





SERENITY COVE Lounger

82" x 82" x 39"

295 Gallons

Cascading Waterfall

Electrical 220v / 60a

2 - 6.0 Pumps

Filtration System Size 50 ft²

Weight: Dry / Filled (approx.)

675 lbs. / 3,475 lbs.



We have had our Serenity Cove for almost two years, and we couldn't be happier. We were initially worried about the amount of upkeep required, but Dynasty's ozonator and filtration system take care of all the work. All that's left is for us to relax and enjoy our spa with minimal upkeep on our end. Our only regret is that we didn't buy it earlier!

Ocean Breeze

VACATION COLLECTION





OCEAN BREEZE Bench

92" x 92" x 39"

425 Gallons

4 Water Features

Electrical 220v / 60a

2 - 6.0 Pumps

Filtration System Size 50 ft²

Weight: Dry / Filled (approx.)

900 lbs. / 4,570 lbs.



The controls are simple, and the settings allow us to keep our spa hot and ready to use all year round. We had family fly in for Christmas last year, and it was absolutely brilliant to watch the kids rush across the snow-covered deck and hop into the steaming hot tub. The worst thing about using the hot tub in the winter is that you have to eventually get out!

Cabana Bay

VACATION COLLECTION





CABANA BAY Lounger

92" x 92" x 39"

425 Gallons

Cascading Waterfall

Electrical 220v / 60a

2 - 6.0 Pumps

Filtration System Size 50 ft²

Weight: Dry / Filled (approx.)

900 lbs. / 4,370 lbs.



Our experience with Dynasty Spa has been and continues to be excellent. Every step of the process from purchase to delivery and installation has been professional and so easy! Our nightly soaks are the break we didn't even know we needed! The options we chose made the experience absolutely wonderful. I love being able to start up the tub from my cell phone so that by the time I'm ready to soak, it's ready and waiting for me

Oasis Collection

SPA MODELS





THE OASIS COLLECTION ARE EQUIPPED WITH THE FOLLOWING STANDARD FEATURES

K.1000 Digital Topside
Underwater LED Light
Illuminated Fountains (If equipped)
Illuminated Waterfalls (If equipped)
Illuminated Diverters
Air / Water Multi - Jets
UV Treated Padded Pillows
Ozone Sanitation System
*VGB Compliant Intake
Energy Efficient Heater
Ecological RMAX™ Insulation
Lucite® Acrylic Shell
Maintenance Free Skirting
Full Wrap-Around ABS Bottom
5" - 3" Standard Taper Cover

Twin Palms

OASIS COLLECTION





TWIN PALMS Dual Lounger

60" x 82.5" x 30"

180 Gallons

Illuminated Fountain Jets

Illuminated Diversers

Electrical 220v / 60a

2 - 6.0 Pumps

Filtration System Size 50 ft²

Weight: Dry / Filled (approx.)

375 lbs. / 2,175 lbs.



My husband and I are in our 50s and remain very physically active. Unfortunately, our daytime adventures result in nighttime muscle aches and joint pain. The Arizona weather is perfect for year-round use of our spa, as it gets quite cool in the mornings and evenings. Dynasty has the best product, as well as the customer service and support to match. Thank you!!

Nassau Royale

OASIS COLLECTION





NASSAU ROYALE Lounger

82" x 82" x 39"

295 Gallons

Illuminated Waterfall

Illuminated Diversers

Reverse Pull Neck Jets

Electrical 220v / 60a

2 - 7.0 Pumps

Illuminated Weir Door

Filtration System Size 100 ft²

Weight: Dry / Filled (approx.)

750 lbs. / 3,935 lbs.



We moved last year and sadly had to leave our Dynasty tub behind. As unfortunate as this was, we knew we wanted another Dynasty tub, so we used the opportunity to upgrade to a six-person tub to be able to entertain guests more comfortably. Knowing that our tub will be covered by Dynasty's 20- year warranty made the decision all that much easier. I know my family and I will enjoy this spa for many years to come.

Caribbean Breeze

OASIS COLLECTION





73
JETS

7

WHITE JET
OPTION
AVAILABLE

CARIBBEAN BREEZE Bench

82" x 82" x 39"

295 Gallons

Illuminated Fountain Jets

Illuminated Diverter

Reverse Pull Neck Jets

Electrical 220v / 60a

2 - 7.0 Pumps

Illuminated Weir Door

Filtration System Size 100 ft²

Weight: Dry / Filled (approx.)

750 lbs. / 3,935 lbs.



Having four kids means shouts from the vans' backseat of "he's on my side" or "I need more room." Our Caribbean Breeze spa provides a welcome respite from this stress. There's enough seating for everyone to have their own space, and plenty of room in the footwell for everyone to stretch out their legs, even for all six of us at once. After the kids go to sleep, Mom and Dad get to enjoy a quiet, peaceful soak. We love Dynasty Spas!

Coconut Bay II & III

OASIS COLLECTION





COCONUT BAY II/III LOUNGER

92" x 92" x 39"

425 Gallons

Illuminated Waterfalls

Illuminated Diverters

Illuminated Weir Door

Reverse Pull Neck Jets

Electrical 220v / 60a

Coconut Bay II - 2 - 7.0 Pumps

Coconut Bay III - 3 - 6.0 Pumps

Filtration System Size 100 ft²

Weight: Dry / Filled (approx.)

900 lbs. / 4,300 lbs.



We took forever making a decision on a company and model, but I'm so glad we decided on this Coconut Bay from Dynasty. I love the way the LEDs light up the tub at night, and being able control the colors and brightness of each section with the In.Mix controls is so awesome! Relaxing in our tub at night, with the lights all on, the waterfalls flowing, and the stereo playing is my safe haven from the stress of the day. 10/10 would recommend

Pleasure Cove II &

OASIS COLLECTION



III



80
JETS

5

WHITE JET
OPTION
AVAILABLE

PLEASURE COVE II/III Dual Lounger

92" x 92" x 39"

425 Gallons

Illuminated Waterfall

Illuminated Diverters

Illuminated Weir Door

Reverse Pull Neck Jets

Electrical 220v / 60a

2 - 7.0 Pumps Pleasure Cove II

3 - 7.0 Pumps Pleasure Cove III

Filtration System Size 100 ft²

Weight: Dry / Filled (approx.)

900 lbs. / 4,300 lbs.



My husband is a roofer, and after a long day at work, he loves to sit in the corner seat to enjoy a shoulder massage with the jets turned on full blast. The stereo sounds great, even with the pumps all turned up and the tub full of people. The LED-lit underwater jets light up the tub so well, and being able to change the color of the lights is too much fun. Thanks Dynasty Spas for lighting up our life!

Palm Island II &

OASIS COLLECTION





PALM ISLAND II/III Bench

92" x 92" x 39"

425 Gallons

Illuminated Fountain Jets

Illuminated Diversers

Illuminated Weir Door

Reverse Full Neck Jets

Electrical 220v / 60a

2 - 7.0 Pumps Palm Island II

3 - 6.0 Pumps Palm Island III

Filtration System Size 100 ft²

Weight: Dry / Filled (approx.)

900 lbs. / 4,300 lbs.

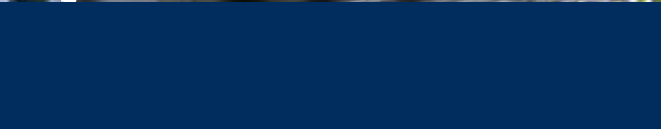


My wife and I have discussed purchasing a hot tub for years and have been shopping around to check out the different spa styles and pricing. As soon as we started looking at the stylish tubs from Dynasty Spas, we knew we were finally in the right place. Our Palm Island looks so striking at night when fully lit with the fountains going...we couldn't be happier.

Paradise Bay II &

OASIS COLLECTION





PARADISE BAY II/III Lounger

92" x 102" x 39"

550 Gallons

Illuminated Fountain Jets

Illuminated Diversers

Illuminated Weir Door

Reverse Pull Neck Jets

Electrical 220v / 60a

2 - 7.0 Pumps Paradise Bay II

3 - 6.0 Pumps Paradise Bay III

Filtration System Size 100 ft²

Weight: Dry / Filled (approx.)

1,000 lbs. / 4,800 lbs.



Our Paradise Bay is just that – PARADISE! It has surpassed our expectations and then some! It's been so easy to maintain, and the kids love using it as well. It's always at the center of our parties and backyard gatherings, which we host even more frequently since purchasing our tub! It's been therapeutic both physically and mentally, and we recommend Dynasty Spas to all of our friends!

Family Collection

SPA MODELS





**THE FAMILY COLLECTION ARE
EQUIPPED WITH THE
FOLLOWING STANDARD FEATURES**

K.1000 Digital Topside
Underwater LED Light
Illuminated Fountains
Air / Water Multi - Jets
UV Treated Padded Pillows
Ozone Sanitation System
*VGB Compliant Intake
Energy Efficient Heater
Ecological RMAX™ Insulation
Lucite® Sterling Marble Acrylic Shell
Corner Skirt Lighting
Maintenance Free Skirting
5" - 3" Standard Taper Cover

*Virginia Graeme Baker Pool and Spa Safety Compliant



11' Family Island Oasis

Family Collection



63
JETS



11' Family Island Oasis Dual Lounger

92" x 132" x 38"
516 Gallons
2 Waterfalls
Underwater LED lighting
UV Treated Pillows
Corner Skirt Lighting
Electrical 240v/48a
Pump 1 - 4.0bhp - 2 Speed Pump
Pump 1 - 4.0bhp - 1 Speed Pump
Filtration System Size 100 ft²
Weight: Dry / Filled (approx.)
1,727, lbs. / 6,000 lbs.

13' Aquex Party

Family Collection



29
JETS

11

13' AQUEX PARTY Bench

92" x 160" x 51"
1,100 Gallons
6 Illuminated Fountain Jets
2 Illuminated River Jets
UV Treated Pillows
Electrical 240v/48a
Pump 1 - 4.0bhp - 2 Speed Pump
Pump 1 - 4.0bhp - 1 Speed Pump
Filtration System Size 100 ft²
2 Single Fold Covers
Weight: Dry / Filled (approx.)
2,200 lbs. / 13,800 lbs.

Dynasty Spas

SWIM SPA COLLECTION





DYNASTY SWIM SPAS ARE EQUIPPED WITH THE FOLLOWING COMPONENTS

K-1000 Digital Controls
Illuminated River Jets
Illuminated Fountain Jets
Under Water LED Lights
Air/Water Multi-Jets
Stainless Steel Grab Bars
CMP U03 Ozone Sanitation System
*VGB Compliant Intake
Quick Temp Heater
Lucite® Acrylic Shell
Maintenance Free Skirting
Ecological RMAX™ Insulation
6" - 4" In Standard Cover

13' Aquex Pro

Swim Spa



10
JETS

4

13' AQUEX PRO

92" x 160" x 54"
1,500 Gallons
2 Illuminated River Jets
6 Illuminated Fountain Jets
Illuminated Jets
Top rail LED Lighting
UV Treated Pillows
Electrical 240v/48a
Pumps 2 - 5.0bhp
Pump 1 - 7.0bhp
Filtration System Size 100 ft²
Exercise / Rowing & Swim Tether
Weight: Dry / Filled (approx.)
2,100 lbs. / 13,500 lbs.

13' Aquex Pro Plus Swim Spa



13' Pro
Swim Spa
with 17' Pro
Specifications
and Features



10
JETS

4

AUDIO

13' AQUEX PRO PLUS

92" x 160" x 54"

1,500 Gallons

3 Illuminated River Jets

6 Illuminated Fountain Jets

Illuminated Jets

Top rail LED Lighting

UV Treated Pillows

In.Stream Audio System

w/4 - 4" Marine Grade Speakers

Electrical 240v/48a

Pumps 3 - 5.0bhp

Pump 1 - 7.0bhp

Filtration System Size 100 ft²

Exercise / Rowing & Swim Tether

Swim Coach - Multi Programmable Workout

Weight: Dry / Filled (approx.)

2,100 lbs. / 13,500 lbs.



16' Aquex Trainer

Swim Spa



29
JETS

4

AUDIO

16' AQUEX TRAINER Lounger

92" x 192" x 60"
1,850 Gallons
3 Illuminated River Jets
8 Illuminated Fountain Jets
Illuminated Jets
Top rail LED Lighting
In.Stream Audio System
w/4 - 4" Marine Grade Speakers
Electrical 220v/60a
Pumps 3 - 5.0bhp
Pump 1 - 7.0bhp
Filtration System Size 100 ft²
Exercise / Rowing & Swim Tether
Swim Coach - Multi Programmable Workout
Weight: Dry / Filled (approx.)
2,700 lbs. / 19,300 lbs.

WHITE JET
OPTION
AVAILABLE



17' Aquex Pro Plus

Swim Spa



30
JETS

5

AUDIO

17' AQUEX PRO PLUS Lounger

92" x 199" x 55"

1,760 Gallons

3 Illuminated River Jets

6 Illuminated Fountain Jets

Illuminated Jets

Top rail LED Lighting

In.Stream Audio System

w/4 - 4" Marine Grade Speakers

Electrical 220v/60a

Pumps 3 - 5.0bhp

Pump 1 - 7.0bhp

Filtration System Size 100 ft²

Exercise / Rowing & Swim Tether

Swim Coach - Multi Programmable Workout

Weight: Dry / Filled (approx.)

2,700 lbs. / 19,300 lbs.



19' Aquex Pro Plus

Swim Spa



39
JETS

6

AUDIO

19' AQUEX DUAL PRO Bench

92" x 224" x 55"

2,100 Gallons

3 Illuminated River Jets

8 Illuminated Fountain Jets

Illuminated Jets

Top rail LED Lighting

In.Stream Audio System

w/4 - 4" Marine Grade Speakers

Electrical 220v/60a

Pumps 3 - 5.0bhp

Pumps 2 - 7.0bhp

Filtration System Size 100 ft²

Exercise / Rowing & Swim Tether

Swim Coach - Multi Programmable Workout

Weight: Dry / Filled (approx.)

3,500 lbs. / 20,300 lbs,





SWIM COACH™ - PROGRAMMABLE WORK-OUT SYSTEM



The perfect balance of art and technology now with an Olympic level training program for swim spas. With its swim spa training program, in.k1000+ can transform any swim spa into the ultimate training machine. Directly on the keypad, training sessions can be customized by setting flow intensities, durations and color indicators. Pre-sets Lap, Transition, Cardio and Power drills can also be selected and customized to match any training needs. in.k1000+ can now control multiple 2 speed pumps and synchronize the jets to create the wide selection of water stream strengths a swimmer needs for serious training.



Select drills, set durations, intensities and more with the touch of a finger on an interface designed for swimmers.



Many parameters can be configured to fit your training habits; warm up, cool down, step time, preparation time and lighting.



You can customize your training session. It's as easy as dragging your finger on the screen to draw the pattern of your choice and save it under your name.

Dynasty Spas

FEATURES AND BENEFITS





STANDARD FEATURES, OPTIONAL FEATURES AND BENEFITS

Digital Controls

LED Lights

Air/Water Multi-Jets

Ozone Sanitation System

*VGB Compliant Intake

Lucite® Acrylic Shell

Maintenance Free Skirting

Ecological Rmax™ Insulation

5" - 3" In Standard Cover

Energy Efficient Heater

UV Treated Padded Pillows

Full Wrap-Around ABS Bottom



ELEGANT AND STRONG

Dynasty Spas uses the best of the best Lucites® timeless acrylic with stunning solids and complex patterns offer a luxurious finish to any vision of relaxation. Lucite® Spa continuous cast acrylic sheet is the preferred choice of manufacturers worldwide.

Dynasty Spas offers a variety of polymer cabinet color options - designed to fit any decor. The cabinet also provides an attractive look, texture, and performance. The maintenance free cabinetry is extremely durable also moisture and impact resistant, therefore it doesn't crack, peel, or fade. Dynasty Spas custom rounded corners and removable panels allows for access to all the areas inside the spa.

LUCITE® ACRYLICS

ACRYLIC COLOR OPTIONS



Sterling Marble

Sterling Marble
only color available
for Swim Spas



Tuscan Sun

Only Available
on Spas



Storm Clouds

Only Available
on Spas



Smokey Mountains

Only Available
on Spas

CONFER SKIRTING

SKIRTING COLOR OPTIONS



**Gray Skirting
Standard**



**Black Skirting
Standard**



**Elite
Coastal Gray
Skirting
UPGRADE**
(Includes
Illuminated
Corner
Panels)



**Elite
Ash Skirting
UPGRADE**
(Includes
Illuminated
Corner
Panels)

Note: Color samples shown are representations of actual color, and are for identification only. Because the color may vary, there is no guarantee that this color will be an exact match to the image shown.

IN.TOUCH2® WI-FI REMOTE

Control all functions of your spa from your iOS or Android smartphone or tablet and the In.touch.2® app. Use predefined spa experiences or customize your own.



THE IN.TOUCH 2® APP,
THE COOLEST WAY TO
ENJOY YOUR SPA



in.touch 2® compatible with the control systems of all Dynasty spas models. The in.touch 2® app can be used from an iOS (version 8 or later) or Android (version 4.4 or later) smartphone or tablet.

INTUITIVE LAYOUTS / EASY CONTROL OF ALL SPA FUNCTIONS / UNLIMITED OPTIONS



Turn on your spa's LED lighting system and create the ideal visual experience for the perfect moment.



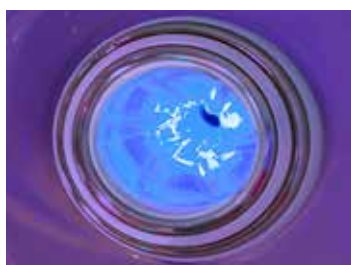
Simply select the filtration configuration that best suits your needs and add your personal settings



Start your pool fountains and waterfalls from afar and control their water flow.



Set the water temperature or select one of the suggested economy modes



Full remote control of jets and preprogrammed spa experiences activated when needed.

IN.STREAM 2, INTEGRATED BLUETOOTH™ AUDIO SYSTEM

Streamed from your spa, your favorite music never sounded so good! in.stream 2 audio station is a compact, rugged and splash proof all in one outdoor audio system that delivers an awesome sound quality through Class D amplifier technology to enhance your backyard audio experience. It comes with an in.p4 docking station that connects, protects and lets you control your audio player or smartphone directly from your spa keypad.

FEATURES 4 TYPES OF AUDIO SOURCES:
AUX, USB, FM, AND BLUETOOTH.



IN.MIX, LED CONTROLS



Stunning underwater light shows can do more than further enrich your soak, they can define your spa environment. They can change the mood from a party atmosphere to a romantic setting, as well as an added safety feature after dark. The in.Mix adjustable and independent zone LED lighting system provides 113 points of light that glows from the footwell up to the spa lip and controls. The visual delight of water shooting through a beautiful spectrum of color adds unique charm to your soak atmosphere after dark





CMP OZONE GENERATING SYSTEM

All our spas are equipped with an ozone treatment system. Odorless and nonirritating to the skin and eyes, ozone is a powerful purifier. It simplifies your spa maintenance and reduces the amount of chemicals needed. It is effective against bacteria, algae, and organic pollutants. In addition, it stabilizes the pH level and helps increase the life of your equipment. For soft and clear

MANAGING YOUR SPA IS CHILD'S PLAY!



Full-featured in.k1000 keypad with color capacitive touch screen display.

Fun, simple, engaging Parting ways with physical buttons, keys and overlays, our in.k1000 touch screen keypad is fun to use and simple to learn. It features an intuitive and engaging one level menu interface

Mode and function selection wheels, all-on/all-off one touch activation key, interactive display icons and on-screen reminders make for a unique user interface. Get direct feedback and seamless interaction with your spa and its value added accessories like in.mix and in.stream 2

in.K1000 - is standard on the Twin Palms, Nassau Royale, Caribbean Breeze, Coconut Bay, Pleasure Cove, Palm Island, Paradise Bay and all Swim Spas



The in.k506 is built with all the great features you've come to love in the in.k800, but in a smaller package. It is discreet, compact, and unobtrusively beautiful. Save space without losing out on function.

K506 - is standard on the Bimini, Treasure Cay, Sunset Cove, Tranquility Harbor, Serenity Cove, Ocean Breeze, Cabana Bay



IN.YE - CONTROL SYSTEM

IN.YE control systems are designed to fit in perfectly and to be easily installed, powered, and connected to pumps and accessories of spas of all sizes and configurations. IN.YE control systems deliver optimal performance and total control, giving spa owners the immediate satisfaction of getting a lot more than what they expected from their spas. Offers a full range of configurations and fully powers all the equipment and accessories of your spa.



Oversized Pump System

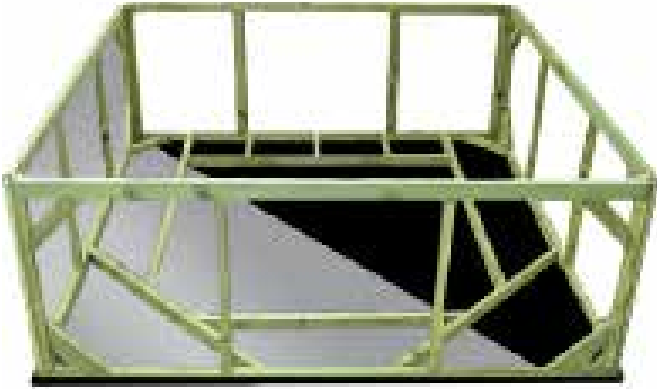
Energy efficient on both high and low speeds with 56 frame design. Installed on an anti-vibration and noise reducing pad.



Superior Bond - Double Protection

Glued and clamped fittings ensure in an extra secure bond between pipes and jets.

MAINTENANCE-FREE



Quality pressure-treated wood structure (50-year life expectancy, meets environmental standards). Removable side panels. Anti-moisture ABS plastic base for increased stability and heat retention. Base and frame with ThermoFoil™ protection. Frame is bonded to shell.

DYNACRETE™ BASE



Made of recycled acrylic and resin. Isolates frame bottom from moisture. The structure's flat base prevents the creation of air pockets, thus ensuring increased stability and foot support rigidity. The most durable and solid spas in the industry.

REINFORCED FINISH



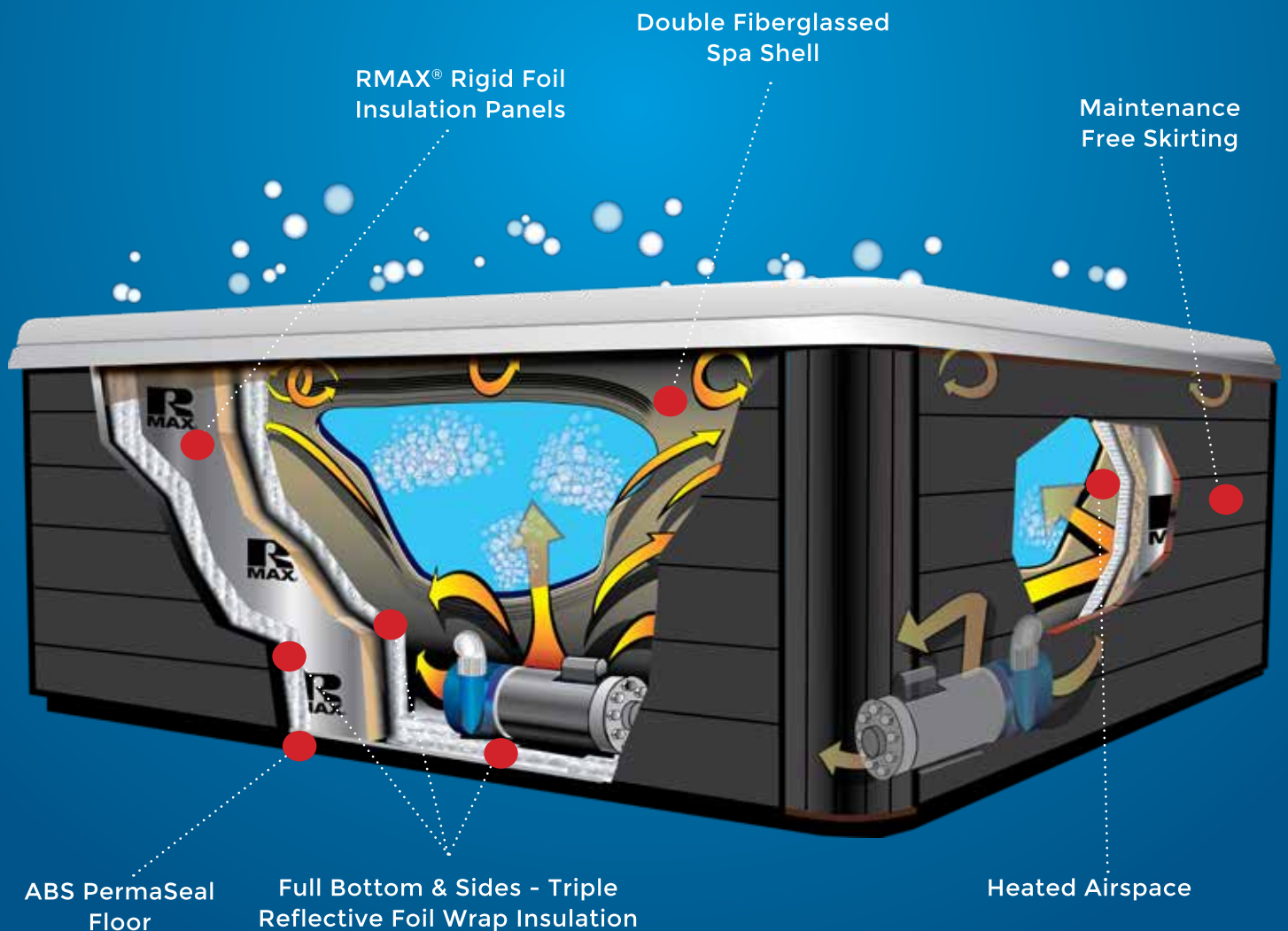
Lucite® Cast Acrylic and reinforced fiberglass finish to ensure strength and durability. Hand rolled process eliminates air pockets which can cause separation

HEATSHIELD

INSULATION SYSTEM



- Up To 7 Times The R-value of other hot tubs on the market.
- Acts as sound barrier
- Added protection against freezing
- The unique design protects equipment,
- Allows easy access for service and upgrading



Covers



Double Sewn, Hand Grips Provide superior durability and an extra level of comfort.



Insulated Heat Bags Helps to eliminate heat loss between the cover fold when spa is not in use.



4 Child Resistant Locking Mechanisms Fasten to each corner of the spa, providing that extra peace of mind.



Sealed Interior Hexene Poly Bag Protects inner foam core by reducing sweating and moisture.

Dynasty Spas recommends that you keep your cover on and locked when spa is not in use!

SPA SAFETY

- Maintain constant adult supervision when children are in or near ANY body of water.
- Install fences, barriers and spa covers to prevent unsupervised access, especially by young children.
- Always completely remove your spa cover before using your spa.
- Inspect your spa equipment on a regular basis to ensure that it is in good working order and that it is safe.
- Always test the temperature of your spa's water before entering the spa. It is recommended that maximum water temperature never exceed 104°F (40°C). Do not soak for more than 15 minutes at one sitting in 104°F (40°C) water.
- Individuals with certain medical conditions, such as heart disease, diabetes, high or low blood pressure, and pregnant women, should not use a spa without advance approval by their physician. If a person has any doubt as to whether a medical condition should limit their use of a spa, they should seek prior consultation with their physician. Individuals with open cuts or wounds should not use a spa until completely healed
- Never use a spa when you are alone and never use a spa while using or after using alcohol or drugs that may cause sleepiness, drowsiness, or raise or lower blood pressure.
- Ask your city about any specific rules and regulations that apply to spa ownership, including local electrical codes.
- Do not allow unsafe or risky behavior in and around the spa.
- Consult with a licensed electrician for installation of or any work to your spa. If you are installing your own spa, it is your responsibility that all work performed complies with the National Electrical Code and all other applicable codes and regulations.
- Your spa's jets, grates, skimmer and main drain should be properly maintained and secured. Spa users should be instructed not to stick any part of their body into such outlets as entrapment and drowning can occur. Spa users with long hair should also be cautioned not to get their hair near such outlets.
- Keep a first aid kit in close proximity to your spa.
- Maintenance and safety manuals contain detailed tips and recommendations and should be read, followed and applied on a regular basis.
- We encourage all spa owners to request safety related publications from the Association of Pool and Spa Professionals (APSP), including: "The Sensible Way To Enjoy Your Spa or Hot Tub," and "Pool and Spa Emergency Procedures for Infants and Children." These APSP publications can be ordered from the APSP by calling or writing them at the APSP, 2111 Eisenhower Avenue, Suite 500, Alexandria, VA 22314, (703) 838-0083, or by visiting the APSP consumer Web site at www.theapsp.org.



REST ASSURED DYNASTY SWIM SPA AND SPA WARRANTY

YEAR

20

WARRANTY

Twenty Year Shell Structure Warranty Dynasty Spas warrants the spa shell against loss of water caused by defects in materials and/or workmanship for a period of TWENTY YEARS from the original date of purchase.

3

YEAR

WARRANTY

Three Year Surface Finish of Shell Warranty Dynasty Spas warrants the surface finish of its spas to be free from blistering and cracking due to defects in the acrylic surface material for a period of THREE YEARS from the original date of purchase.

5

YEAR

WARRANTY

Dynasty Spas warrants the electrical equipment components - specifically the control system (pack and topside), pumps, heaters, and air blowers against malfunction/or defects in materials and/or workmanship for a period of THREE YEARS from the original date of purchase, to the original owner only. Years four and five will be prorated to 50% of replacement cost of components and labor. This Limited Warranty does not apply if the failure is caused by or contributed to by any of the following: improper wiring, use of extension cords, improper alterations or modifications, or failure to plug into isolated service, as indicated by the manufacturer's specifications. Further, this Limited Warranty follows the guidelines of the original equipment manufacturers. The labor coverage is an extended warranty program maintained by Dynasty Spas on your behalf. Your dealer or authorized repair facility has details and procedures for submitting warranty claims.

5

YEAR

WARRANTY

Five Year Plumbing Warranty

Dynasty Spas warrants all plumbing parts to be free from defects in material and/or workmanship for a period of THREE YEARS from the original date of purchase, as long as the spa is owned by the original purchaser. Years four and five will be prorated to 50% of replacement cost of components and labor. Further, this Limited Warranty specifically covers leaks from the wall fittings, jet fittings, internal plumbing, internal glue joints, freeze drains and all bonded parts, including the filter compartment and light lens. Damage resulting from failure to properly winterize the spa prior to freezing weather, or failure to properly winterize the spa after a component failure, is not covered under this Limited Warranty.

1

YEAR

WARRANTY

One Year - Other Warranty

See Dynasty Spas Limited Warranty for additional information



Our 4 best reasons to buy “MADE IN AMERICA” Spas

American Jobs

American Jobs - The loss of American family owned manufacturing jobs over the past 15 years has had a staggering effect on the United States economy and job market. Our American made spas and swim spas products further ensure that Dynasty Spas will keep their manufacturing efforts in the United States and employ American workers.

Environment

Environmental Concerns - Purchasing Made in America spas and swim spas just makes environmental sense. American - made spas and swim spas carry a much smaller carbon footprint than products produced overseas. Shipping products around the globe comes at a high environmental cost due to plane and ship emissions and buying U.S. products dramatically cuts those costs down which in return helps with times.

Quality

Quality - When you see “Made in the USA” sticker on your spa, you know that you have your hands on good quality American made spa. Dynasty Spas manufactures the spa and swim spas in the U.S. have full control of the process from the materials being used to the way products are being constructed. This complete oversight over the manufacturing process results in a quality spa that cannot be matched by outsourcing.

Factory Service

Factory Service - Dynasty spas factory service starts by everyone at Dynasty Spas treating other like they would like to be treated. Returning calls on the same day or next morning. Following up, if we transfer to a colleague to make certain our customer's needs are taken care of. Giving feedback to our customers on all their orders, spas, covers and parts. Doing all we can to get orders to our customer as quickly as possible without quality compromise. Providing reliable and swift back up support to our customer service representatives. It is saying what we will do and then doing what we have said. Not being afraid to make promises and going the distance to keep them. It is putting our customers first on all we do. We respect our customers and trust that our Dynasty Spas customers put in us.

Dynasty Spas is proud to make out innovative spas and swim spas products right here in the United States and we hope you share the pride when you use American Made Dynasty Spas.

The full content of this brochure is protected by the © Copyright laws of the United States. We own all rights and license all in the text, images, photographs, graphics, and other content provided.



2023 The manufacturer reserves the right to change product selections and/or make product modifications without notice. Your Dynasty Spas Dealer/Contractor is an independent business person and not an agent or employee of the manufacturer of Dynasty Spas product line or any of its subsidiaries. Neither the manufacturer of Dynasty Spas nor its subsidiaries accept any responsibility for any representations, statements or contracts made by any Spa Dealer/Contractor.